

# STAR WARS

THE CLONE WARS

Boba Fett™

# ELECTRONIC HELMET

AGES 5+

94995

**IMPORTANT!**

PLEASE READ  
INSTRUCTIONS  
COMPLETELY BEFORE  
WEARING TOY.

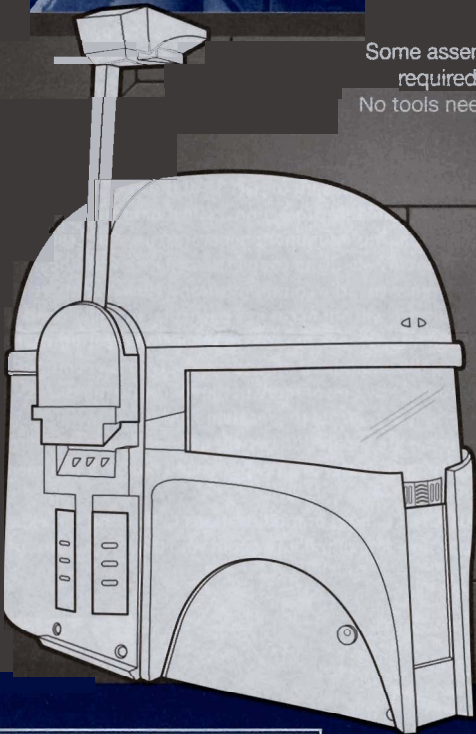
Some assembly  
required.  
No tools needed.



R03 size

**BATTERIES  
INCLUDED**

Replace with 3 x  
1.5V "AAA" or R03  
size batteries.  
Alkaline batteries  
recommended.  
Phillips/cross head  
screwdriver  
(not included) needed  
to replace batteries.

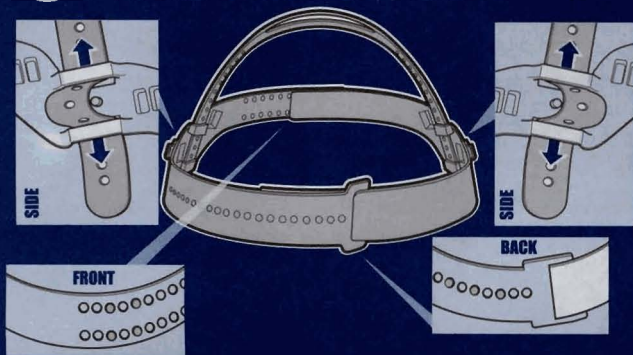


**WARNING:**

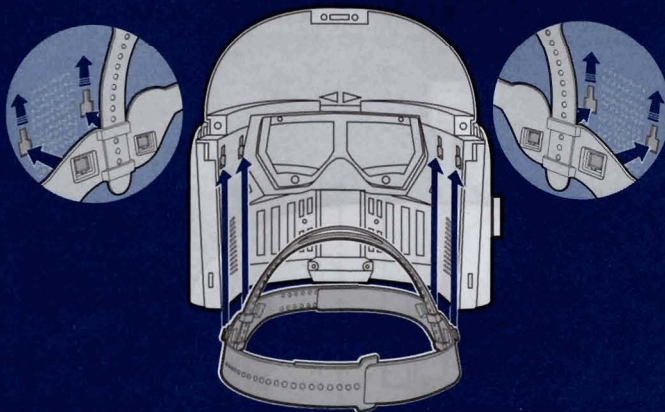
THIS IS A TOY. Does not provide protection.

# ASSEMBLY & STRAP ADJUSTMENT:

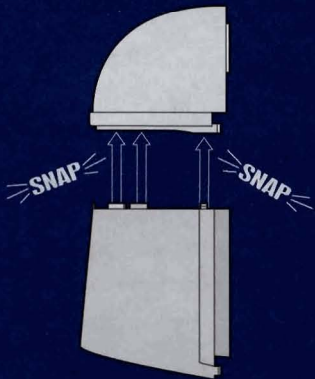
- 1** Adjust straps to fit child's head. Straps can be readjusted once they are attached to helmet.



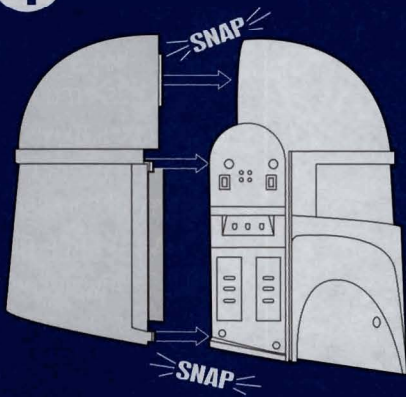
- 2** Insert tabs into holes. Slide up towards top of helmet. **Make sure all four mounting points are secure.**



- 3** Attach upper and lower halves of helmet back.



- 4** Attach helmet back to helmet front.



- 5** Attach antenna.

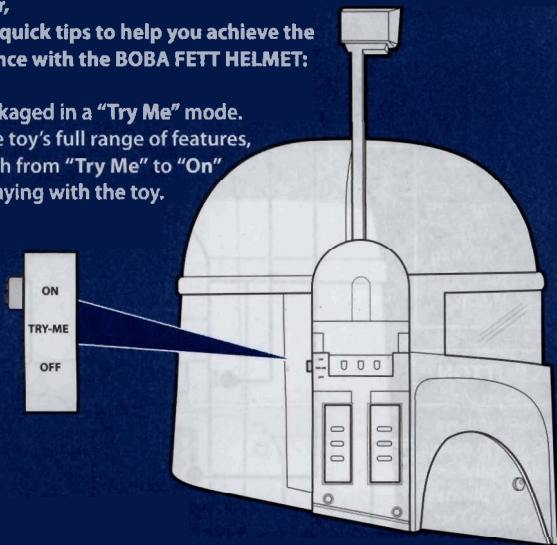


# BEST PERFORMANCE GUIDE:

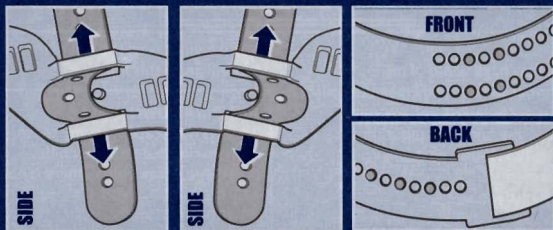
Dear Consumer,

Here are some quick tips to help you achieve the best performance with the BOBA FETT HELMET:

- This toy is packaged in a "Try Me" mode. To activate the toy's full range of features, slide the switch from "Try Me" to "On" before first playing with the toy.



- Place helmet straight down on head. Make sure the straps are adjusted to keep it steady on the child's head so your child can see through the vision opening.



- If the phrases and sounds are slow or unclear, check the batteries to make sure they are inserted correctly and are fresh.

# FEATURES:

## ON / TRY ME / OFF

Switch to "ON" for full range of features. When helmet is not in use, slide switch to "Off" to help conserve battery life. Antenna must be attached for full range of features.

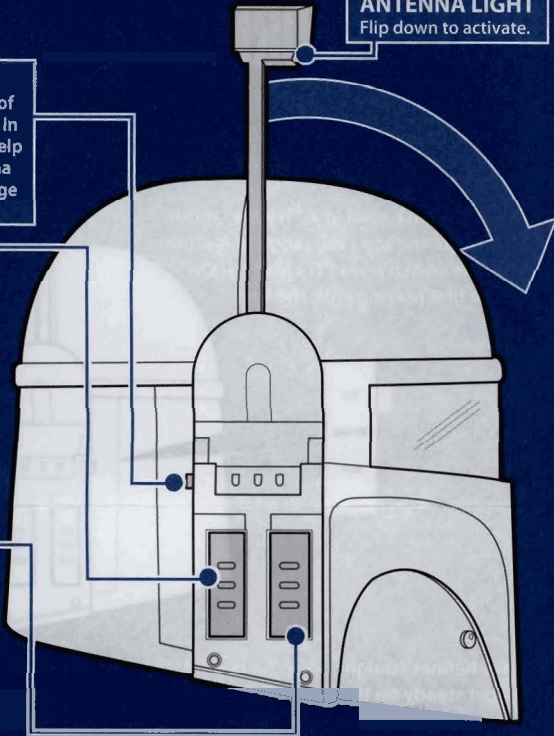
## SOUNDS BUTTON

Swing antenna light UP or DOWN; the helmet plays sounds or phrases in each position. Wearing the helmet, press the button to hear sounds.

## PHRASES BUTTON

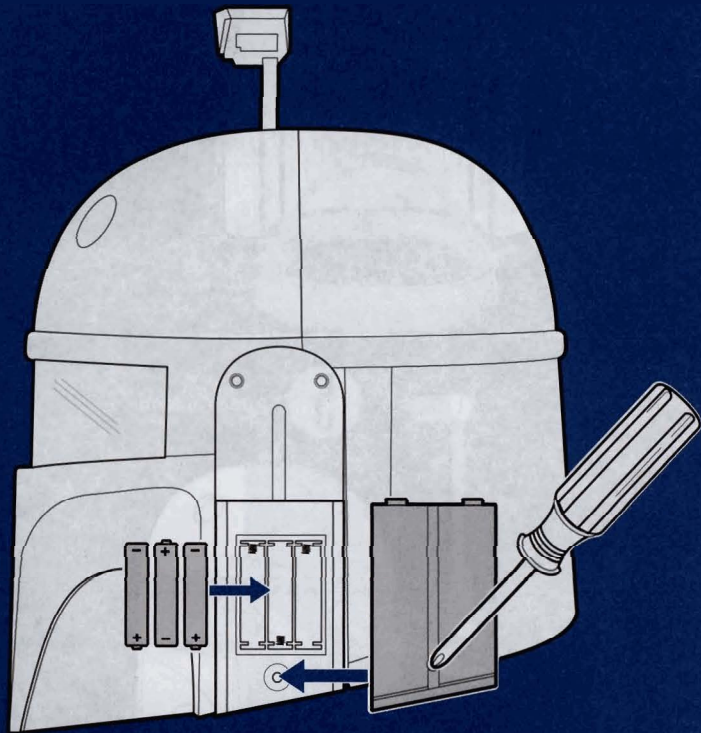
Swing antenna light UP or DOWN; the helmet plays different phrases in each position. Wearing the helmet, press the phrases button to hear Boba Fett phrases.

**ANTENNA LIGHT**  
Flip down to activate.



# TO REPLACE BATTERIES:

Loosen screw in battery compartment door with a Phillips/cross head screwdriver (not included). Remove door. Remove and discard batteries. Insert 3 x 1.5V "AAA" or R03 size batteries. Alkaline batteries recommended. Replace door, and tighten screw.



# PHRASES:

## ANTENNA UP:

I'm Boba Fett... You may have heard of me  
There's a bounty on your head... and I mean to collect it  
Resistance is pointless... escape is not an option  
You have no chance... you know my reputation  
If you try to escape... I will hunt you down  
You're worth a lot to me  
You're lucky Jabba wants you alive  
You're worth more alive... but I'll take you in either way  
Surrender... or face disintegration  
Catch me if you can  
This battle is not over

You have not seen the last of me  
We will finish this fight

## ANTENNA DOWN:

There is no escape from my sensors  
You can run, but you can't hide  
I have you in my sights...there is no escape  
I am the hunter... you are the prey  
There is no escape  
You're mine  
I never miss

NOTE: Some sound effects will play with phrases.

# IMPORTANT: BATTERY INFORMATION

## CAUTION:

1. As with all small batteries, the batteries used with this toy should be kept away from small children who still put things in their mouths. If they are swallowed, promptly see a doctor and have the doctor phone (202) 625-3333 collect. If you reside outside the United States, have the doctor call your local poison control center.
2. Always follow the instructions carefully. Use only batteries specified and be sure to insert them correctly by matching the + and - polarity markings.
3. Do not mix old batteries and new batteries or standard (carbon-zinc) with alkaline batteries.
4. Remove exhausted or dead batteries from the product.
5. Remove batteries if product is not to be played with for a long time.
6. Do not short-circuit the supply terminals.
7. Should this product cause, or be affected by, local electrical interference, move it away from other electrical equipment. Reset (switching off and back on again or removing and re-inserting batteries) if necessary.
8. RECHARGEABLE BATTERIES: Do not mix these with any other types of batteries. Always remove from the product before recharging. Recharge batteries under adult supervision. **DO NOT RECHARGE OTHER TYPES OF BATTERIES.**

## FCC STATEMENT

This device complies with part 15 of the FCC Rules. Operation is subject to the following two conditions: (1) This device may not cause harmful interference, and (2) this device must accept any interference received, including interference that may cause undesired operation.

This equipment has been tested and found to comply with the limits for a Class B digital device, pursuant to part 15 of the FCC Rules. These limits are designed to provide reasonable protection against harmful interference in a residential installation. This equipment generates, uses and can radiate radio frequency energy, and, if not installed and used in accordance with the instructions, may cause harmful interference to radio communications. However, there is no guarantee that interference will not occur in a particular installation. If this equipment does cause harmful interference to radio or television reception, which can be determined by turning the equipment off and on, the user is encouraged to try to correct the interference by one or more of the following measures:

- Reorient or relocate the receiving antenna.
- Increase the separation between the equipment and receiver.
- Consult the dealer or an experienced radio/TV technician for help.

**CAUTION:** Changes or modifications to this unit not expressly approved by the party responsible for compliance could void the user's authority to operate the equipment.



Product and colors may vary.  
© 2010 Lucasfilm Ltd. & ® or TM where indicated.  
All rights reserved.  
®\* and/or TM\* & © 2009 Hasbro. All Rights Reserved.  
TM & © denote U.S. Trademarks.

PN: 7025740000